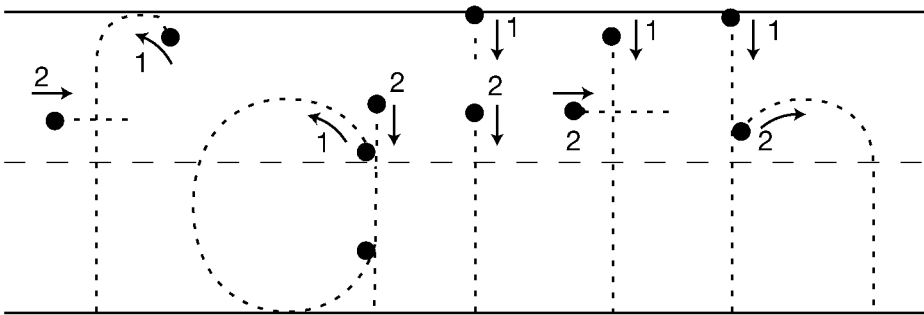
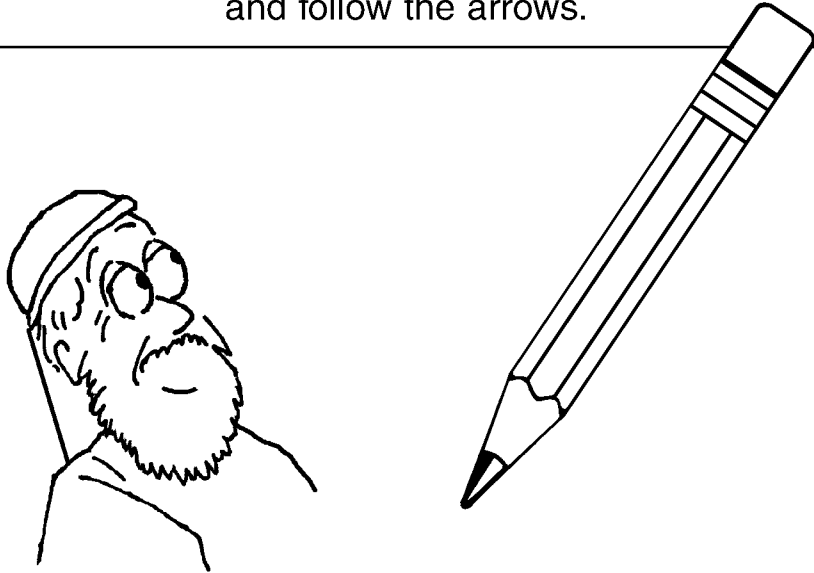


Job never lost his faith in God.

Trace the letters. Start at each numbered ● and follow the arrows.



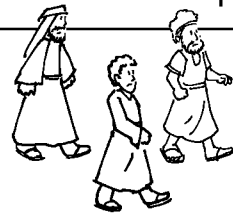
Ages 3+

July 12, 2020 • Job 7:1-10

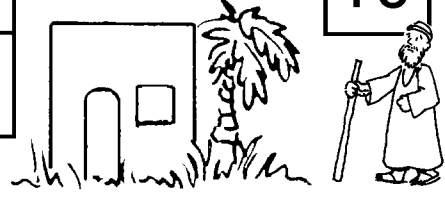
A Righteous Man Suffering

Job was a good man, but he had many troubles. His friends came to offer comfort.

Follow the maze by shading in the number path in order.
1 2 3 4 5 6 7 8 9 10



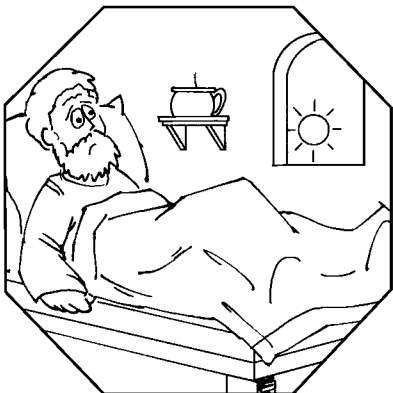
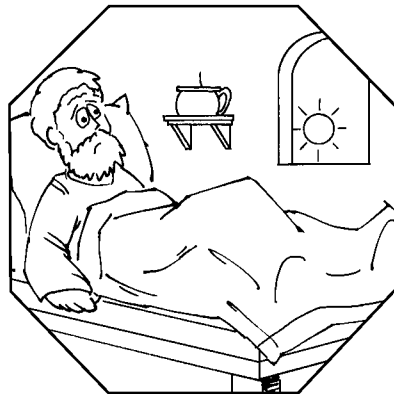
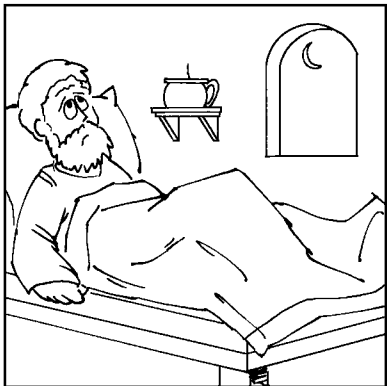
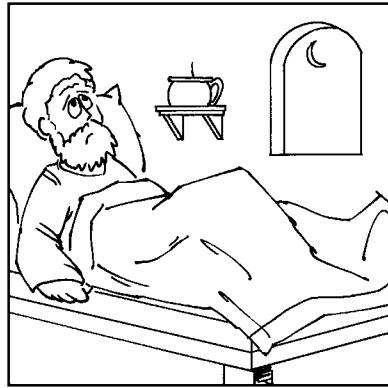
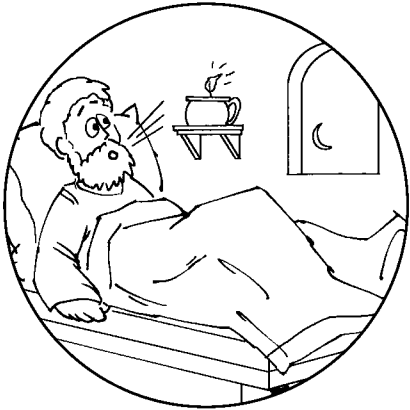
1	2	5		3	
	3	4	2	9	5
4	9	7	5	6	7
6		2		3	8
		8			10
9	10				



Children's Ministry
<https://www.fbcpendleton.org/>

Job told his friends that he tossed and turned in his bed until dawn.

Match the shapes.



Job prayed to God continually.

Connect the dots. A B C D E F G H I J K

